



HEALTHY WOMAN
ONLINE
is here!

Go to www.healthywomanonline.com to join today!

Vicki Benson
Heritage House Realty, Inc.



• Commercial • Residential
660-626-4500
www.vickibenson.net
2805 N. Baltimore • Kirksville, MO • 660-665-5638



Character Home Service

Heating • Cooling
Electrical • Plumbing
Appliances

Cell: 660-216-4419



Community Pride

A Publication of the Kirksville Area Chamber of Commerce • 304 S. Franklin • P.O. Box 251 • Kirksville, MO 63501
(660) 665-3766 • Fax (660) 665-3767 • e-mail execdirector@cablone.net • www.kirksvillechamber.com

Kirksville Area Chamber of Commerce
P.O. Box 251 • 304 South Franklin
Kirksville, Missouri 63501
Address Service Requested

PRSR STD
U.S. POSTAGE
PAID
KIRKSVILLE, MO
63501
PERMIT NO. 26

Executive Director: Sandra Williams

October 2011

The Kirksville Bacon Fest was a huge success, in part due to the beautiful weather, but especially thanks to our great sponsors:



Pageant Winners



Recipe Contest Judges

Kraft Foods, Oscar Meyer, KTVO, Century 21 Whitney Agency, Kirksville Tourism, Northeast Regional Medical Center, King Appliance & Furniture, Complete Family Medicine & Urgent Care, Pickler's Famous, Ameren UE, Walmart, The Blossom Shop, Salon Nouveau, Miss Northeast Counties, Whitney Harrison Insurance

Special Thanks to Tim Cason, Round Barn Blues Performers, True Men and The University Swingers

Business After Hours 5-7 pm
Thursday, October 20th
Sponsored by Northeast Regional Medical Center
at Northeast Regional Medical Group Office, New Office Bldg at 1607 S. Baltimore



At AmerenUE, we pledge to connect Missouri by providing reliable power, dedicated customer service and vision for the future.

We Listen. We Respond. We Deliver.

VIDEO MARKETING USA

Online Marketing Professionals

Online Marketing

Affordable Websites

(660) 665-1872

www.VideoMarketingUSA.com

Davis-Playle-Hudson-Rimer Funeral Home and Crematory in Kirksville

Hwy 6 East
2100 E. Shepherd Ave.
(660) 665-2233
(660) 665-3744

Playle & Jones Family Funeral Home
Unionville, MO
(660) 947-2200

Commercial **CARPET CLEANING** Residential

24 Hour Emergency Service

- Emergency H2O Extraction
- Fire & Water Restoration
- Stainwise Carpet Cleaning
- Air Duct Cleaning
- Pet Odor & Spot Removal
- Janitorial

SERVPRO Of Kirksville
Fire & Water • Cleanup & Restoration™ **660.665.3390**
Independently Owned and Operated

Like it never even happened.®



1708 S. Jamison
Kirksville, MO 63501

Phone: 660.665.1922
Fax: 660.665.2153
adairymca.org



The Golden Ruler Of Kirksville

LOCALLY OWNED, AGGRESSIVE PRICING, NEXT DAY DELIVERY ON MOST ITEMS, IN-STORE PICK-UP, COPIES & PRINT JOBS, COPIERS, PRINTERS & MORE
404 SOUTH ELSON PHONE: 665-GOLD FAX: 627-RULE
WWW.TGROFKIRKSVILLE.COM



BENTON & ASSOCIATES INC
Consulting Engineers/Land Surveyors

2414 S. Franklin St.
Kirksville MO 63501
660-665-3575
adorrell@bentonassociates.com



Northeast Regional Medical Center

315 S. Osteopathy
Kirksville, MO 63501
660-785-1000
www.nermc.com

Find a Physician 660.785.1319



American Trust Bank
(660) 665-7703
2817 N. Baltimore Kirksville, MO
atrustbank.com
See us for all your financial needs
Member FDIC



- Sept 29- AT Still University Founder's Day celebration alumniaffairs@atsu.edu
- Oct 1 Adair County Young Farmers Truck & Tractor Pull, NEMO Fairgrounds
- Oct 1 NEMO Job Fair, NEMO Fairgrounds; 11 am-4 pm
- Oct 4 Tourism Advisory Brd. Mtg., Chamber; 8 am
- Oct 5 Truman State Univ. Homecoming Parade, 9 am; Downtown on Franklin Street
- Oct 8 Columbus Day, Chamber Office Closed
- Oct 10 Kirksville Leadership Institute Graduation, 8 am - 2 pm; Cottage Grove Bed & Breakfast
- Oct 11 Merchants Committee, 8 am; Chamber Office
- Oct 12 Executive Committee Meeting, Chamber Office; 8 am
- Oct 13 Ribbon Cutting, Vicki Benson & RE/MAX Home Team, 5:30 pm; 111 S. Baltimore
- Oct 13 5 Under 40 Banquet, 7 pm; Kirksville Arts Asso., Sponsored by KVYP
- Oct 14-16 SPGMA Bluegrass Festival, NEMO Fairgrounds
- Oct 16 Hwy. 63 Fun Run/Walk/Ride, 2 pm; on the new highway
- Oct 17 Chamber Board Meeting, Chamber Office; 12 pm Noon
- Oct 19 Economic & Comm. Dev. Comm. Mtg., 3:30 pm; Chamber Office
- Oct 20 Chamber Board Mtg., Chamber; 12 pm Noon
- Oct 21 TGIF, the Government in Focus, State of Education Address, 8 am; Adair County Annex; coffee & donuts served at 7:30 am
- Oct 22 Mule Show, 8 am - 5 pm; NEMO Fairgrounds
- Oct 24 Ribbon Cutting for New Highway 63, 11 am; sponsored by MODOT
- Oct 29 Halloween Carnival, 2-4 pm; Adair Co. Family YMCA, sponsored in conjunction with KV Parks and Recreation
- Oct 29 Halloween Fun Fest, times & locations TBA; sponsored by Chamber's Merchant Committee

Every Saturday Kiwanis Farmers Market, 7 am - Noon; May-Oct. Downtown on Elson Street, west side of the Square



The Chamber's Technology Committee presents....

"I Bought It, Now What Do I Do With It?"

Come to get info on the advantages of using a variety of newly introduced electronic gadgets including Tablet PCs, Laptops, Smart Phones, E-Readers, Game Consoles and other high tech devices. Bring your own device or questions about something you might buy! Light Refreshments will be served.

Thursday, November 3, 2011

Noon-1pm

A.T. Still University

Gutensonh Clinic Room 357

Please RSVP by October 31, call (660) 665-3766 or e-mail projmgr@cableone.net

New Members

Anthony C. Van Soest, DMD (Dentist)

201 South Baltimore, Suit B

Kirksville, MO

Phone: 660-627-2277

Email: avansoest@cableone.net

Anne Van Soest, Office Manager

Ray and Judith Klinginsmith (Retirees)

PO Box 1061

Kirksville, MO

Phone: 660-626-6648

Fax: 660-665-1111

Email: rayklaw@sbcglobal.net

Edward Jones- Jeff Jachura

(Financial Consultant)

210 Pfeiffer Avenue

Kirksville, MO

Phone: 660-665-4012

Fax: 877-728-7219



Help Kirksville Young Professionals honor 5 of Kirksville's up and coming community members under 40!

Awards, sponsored by KTVO ABC and CBS, will be given to 5 young professionals at a banquet honoring their accomplishments!

October 13, 2011 at 7 pm

Tickets \$20 each

Please RSVP to Amanda at 665-3766

Location to be announced.

Looking for a way to get more involved with the Chamber and our Community?

The Economic & Community Development Committee will meet

Wednesday, Oct. 19, 2011

3:30 pm Chamber Office

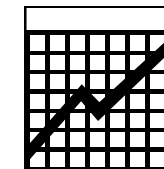
Discuss & help implement projects to benefit this community & our economic growth

New Committee Members are Welcome

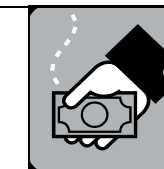
Happy Anniversary!

The Chamber wishes to thank the following businesses for reaffirming their belief in the Chamber of Commerce.

- Adair County Ambulance District
- Adair County Public Water Supply District #1
- American Family- Fred Collop Agency
- American Passenger Rail Heritage Foundation
- Casey's General Store
- Comfort Inn
- Complete Family Medicine
- Dark Ops Solar Solutions
- Dr. and Mrs. H. Norman Clarkson
- Gerry Shoop
- IKON Office Solutions
- James R. Conner
- Jerry and Shirley Gillum
- Kirksville Kiwanis Club
- Kirksville Rotary Club
- KLTE Radio
- Loren Hatfield Body and Frame
- Mary Immaculate Church and School
- Pat and Eleanor Ellebracht
- Small Business Technology and Development Center
- State Farm Insurance
- Studio 1004
- The Crossing
- The Greek Corner
- The Willows Lakehouse
- Travelers Hotel Apartments
- Tri-County Electric
- Twins Hunting Lodge
- Wendy's



Local Economic Trend\$



This year in the *Community Pride Newsletter*, the Chamber of Commerce will share with Chamber members information and trends from the local economy that may be of interest to you in business.

August 2011

- August New City Business Licenses	30
- August New County Business Licenses	7
- August New Residential Building Permits	1
- August New Commercial Building Permits	0

Source: City of Kirksville

August Births at NRMC	41
Source: Northeast Regional Medical Center	

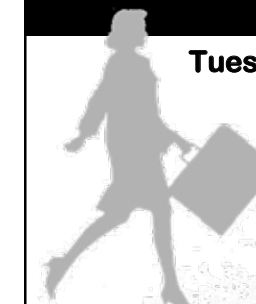
August 2011:

-Missouri Unemployment Rate	9.1%
-Adair County Unemployment Rate	8.8%
-Adair County # of Unemployed	1094
Source: MERIC www.missourieconomy.org	

Gasoline prices Last month	
\$3.34	\$3.44
Essential Air Service-August: (local commercial passengers)	887
Source: Kirksville Regional Airport	

Northeast Missouri's

LARGEST Job Fair



Tuesday, October 4, 2011
11am to 4pm

NEMO Fairgrounds
Hwy 11 East
Kirksville, MO

Area job seekers are encouraged to attend & meet with hiring staff from numerous area employers in all types of industries!

Sponsored by: The Kirksville Area Chamber of Commerce, MO Career Center- Kirksville, K-REDI and the Missouri Employer Committee

For More Information contact Missouri Career Center 660-785-2400 or Kirksville Area Chamber of Commerce 660-665-3766

There will also be great opportunities to complete applications on site!